

Innovation Centre

Community Energy Horsham in collaboration with Energise South

Key Facts

263
panels

75.11 kW
capacity

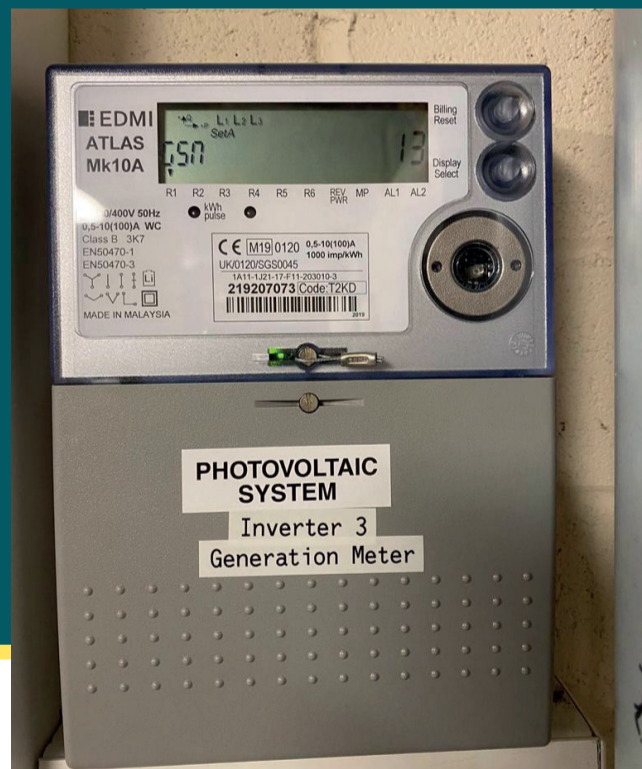
72,857 kWh
output per year

16,028 kg CO₂
saved per annum*
or **power for 24**
houses for a year

£4,335
centre saves per year

£158,051 centre
saves over 25 years

*based on UK grid intensity
of 220gmsCO₂/kWh



The Innovation Centre is a large commercial unit on the Churchfields Estate in Hastings, managed by Sea Change for multiple business tenants. These panels have performed exceptionally well and are currently operating at 114% of their projected capacity in spite of 2021 being a poor solar year.

In some sunny months they were producing 135% of their expected output.

Contact

Community Energy Horsham

energy@sussexgreenliving.co.uk

The two arrays at the Innovation Centre have been the best performing to date.

They generate enough power for 24 homes a year, or 607 homes across the full license period.

We estimate the savings as £158,051 over 25 years and the carbon savings as 400,713 kgs.

There are many similar commercial roofs in the industrial

estates of Hastings and other seaside towns. Covid and the consequences of Brexit have made many businesses apprehensive about their long term futures and we believe that in a stable economy more businesses would have been willing to take up the solar offer.

In circumstances such as these we are exploring shorter renewable contracts for sites where the tenants may change.